

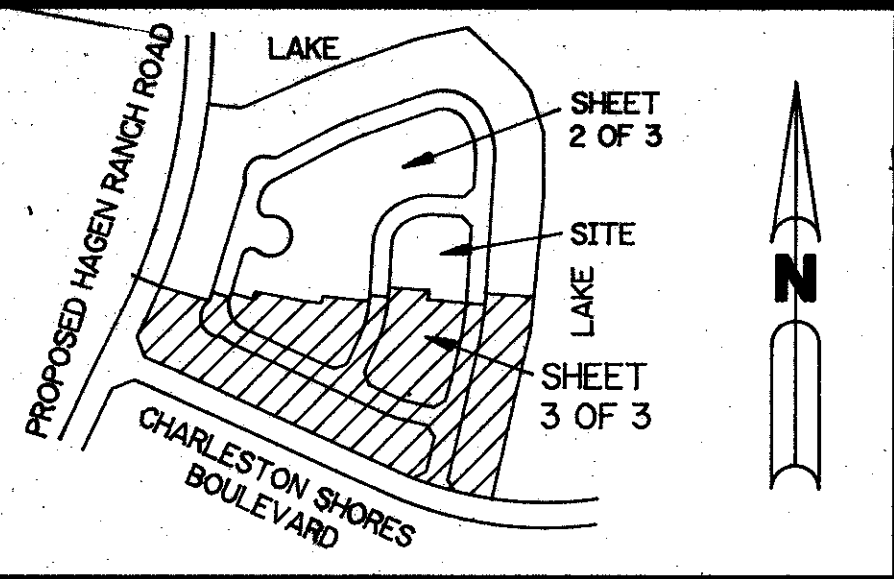
A PART OF LAKE CHARLESTON PLANNED UNIT DEVELOPMENT

LAKE CHARLESTON PLAT NO. I - PARCEL "C"

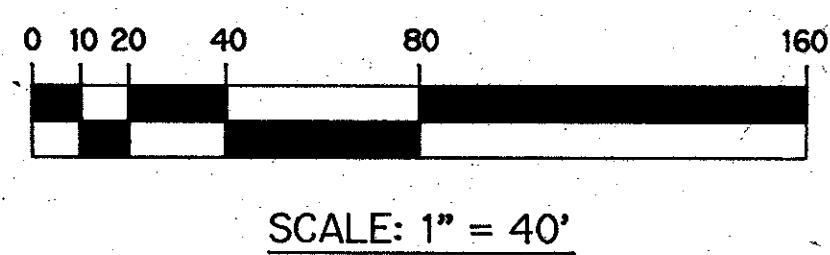
BEING A REPLAT OF TRACT 'C' ACCORDING TO THE PLAT OF LAKE CHARLESTON PLAT NO. 1 - P.U.D. AS RECORDED IN PLAT BOOK 60, PAGES 147 THROUGH 151 INCLUSIVE, OF THE PUBLIC RECORDS OF PALM BEACH COUNTY, FLORIDA. SECTION 10, TOWNSHIP 45 SOUTH, RANGE 42 EAST

SHEET 3 OF 3

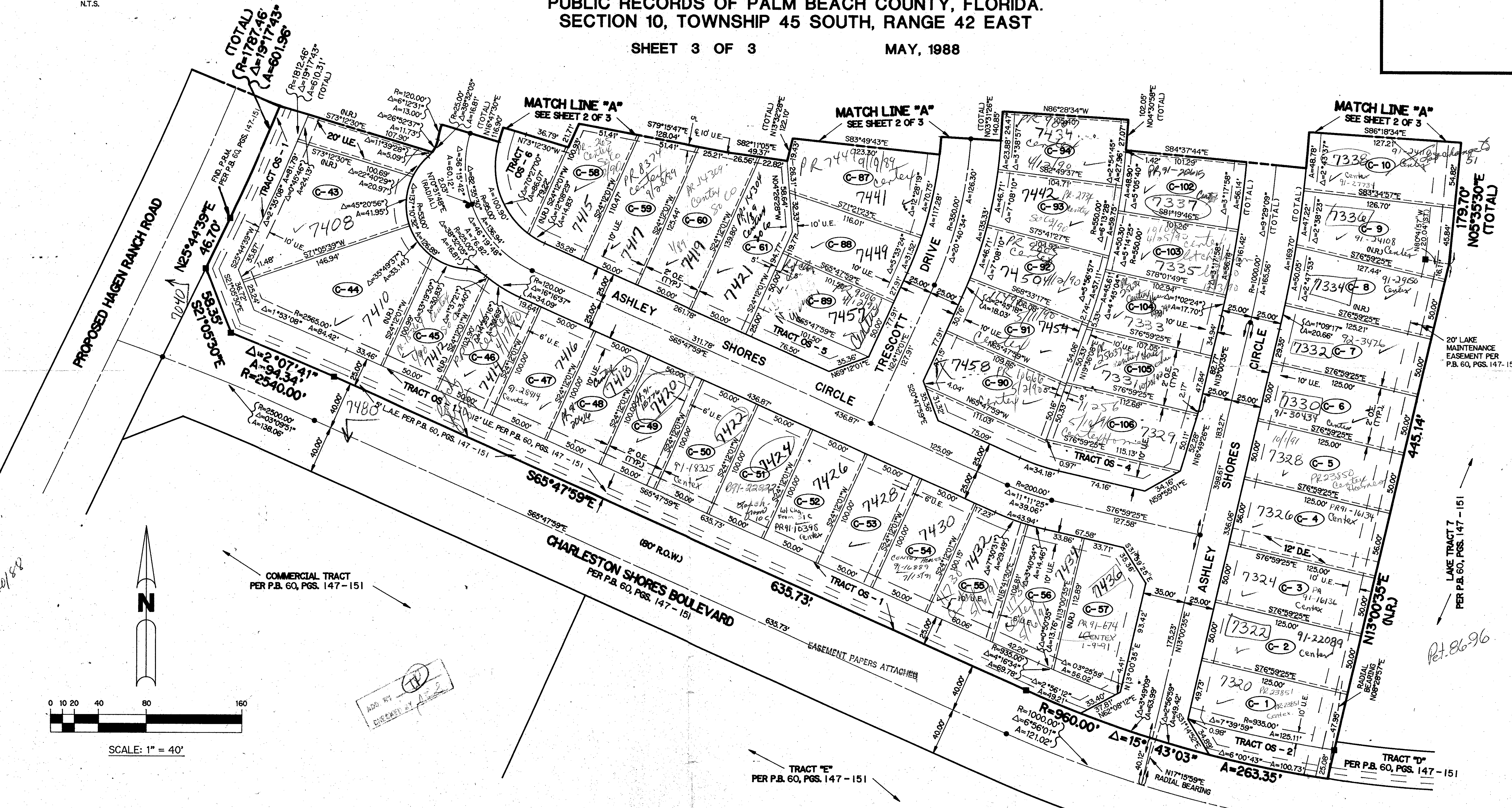
MAY, 1988



KEY MAP
N.T.S.



Handwritten notes:
 Lake Charleston
 PAGES 5, 185A
 RIS 86-96
 466
 10/15/88
 172 439
 12/20/88



THIS INSTRUMENT PREPARED BY
 PERRY C. WHITE P.L.S. 4213 STATE OF FLORIDA
 LAWSON, NOBLE AND ASSOCIATES, INC.
 ENGINEERS PLANNERS TESTING SURVEYORS
 BOYNTON BEACH, FLORIDA